

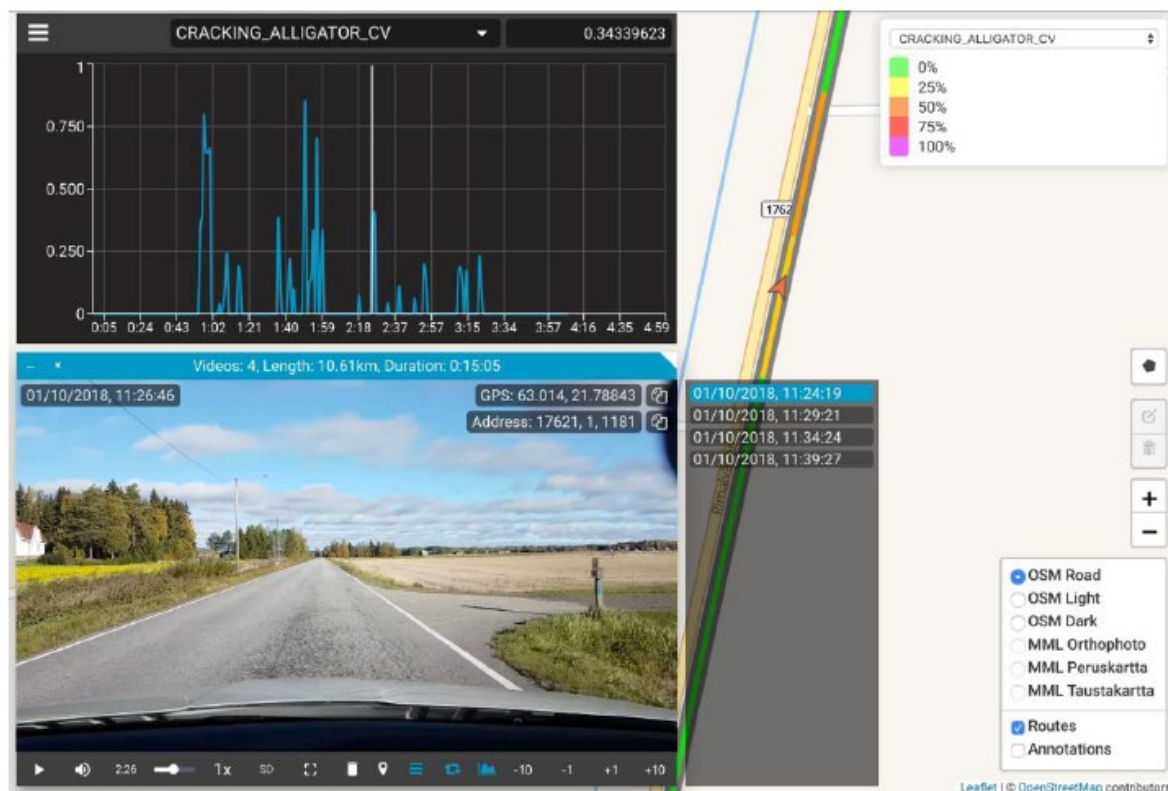
Pavement Condition Rating Summary 2024

Non-State Federal Aid Eligible Roadways
(as of August and September 2024)

BMTS

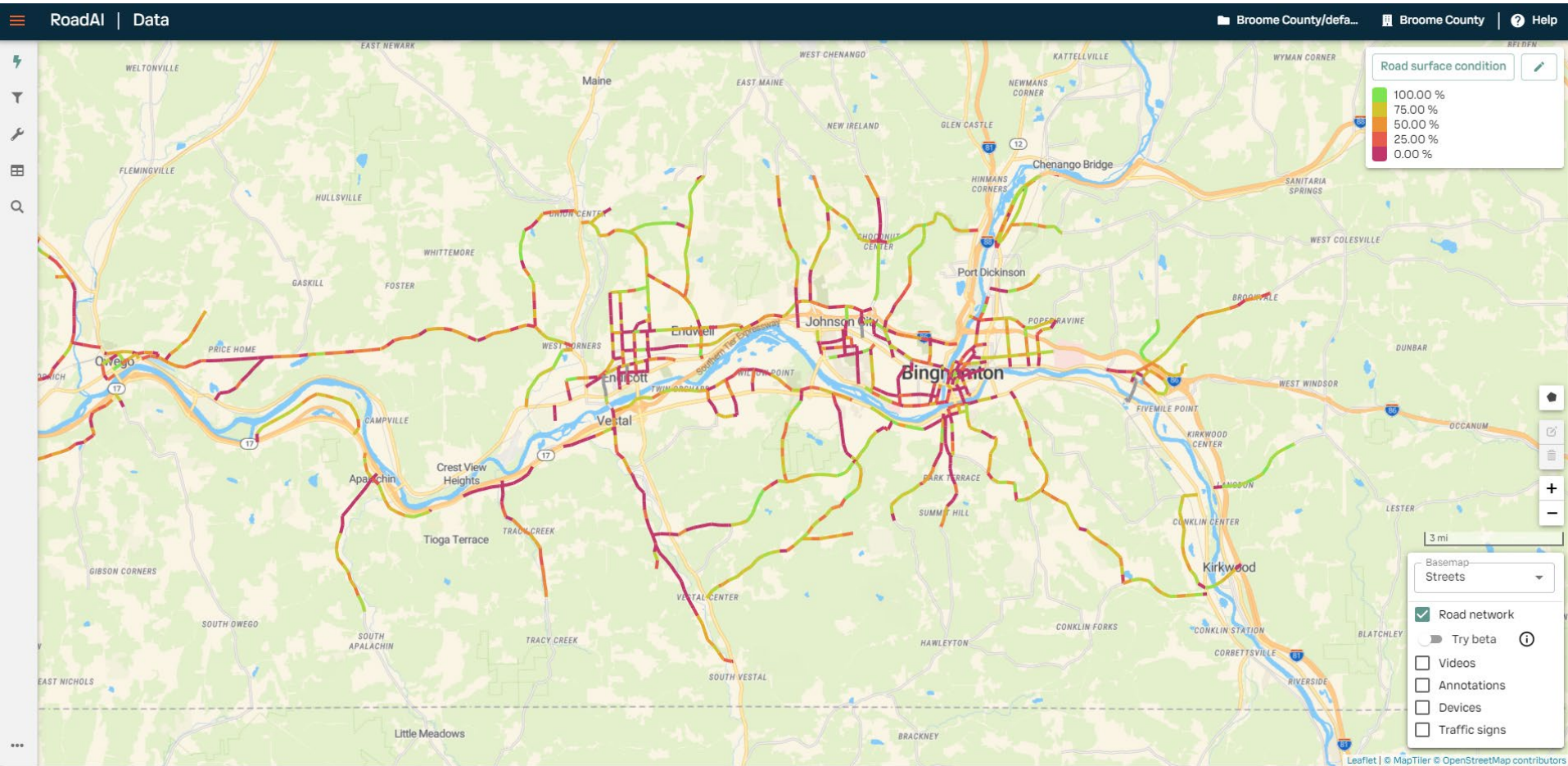


Figure 2 – Analyzed Heatmap (Road pavement defects / road markings)



VAISALA

RoadAI





New Pavement Scoring Methodology and Surface Condition Ratings

The pavement condition value represents the overall condition of the pavement. **A value of 100% represents the best possible condition and 0% the worst.**

A deduct value is calculated for various pavement defect types using their severity values. The severity of a defect is defined by its lateral extent (width relative to the road width). This definition is visualized through an example in Figure 1.

Each defect type has their own severity/deduct mapping.

The pavement condition value is calculated by subtracting the deduct values from the value 100%.

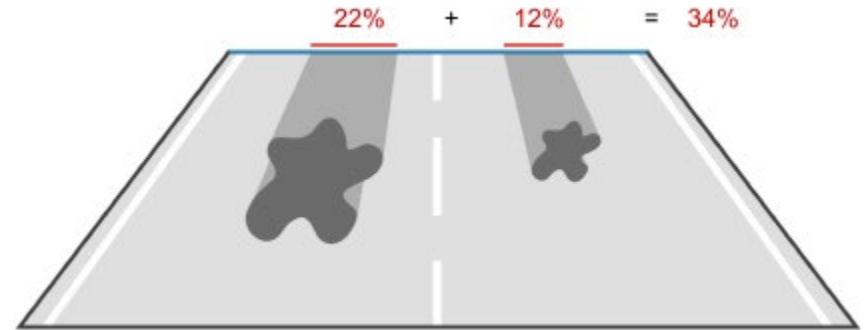


Figure 1. The two gray blobs present surface defects of the same type. In this window, the severity of the defect is defined as the ratio of defect's combined lateral extent to the surface width.



5
Poor

Frequent

Moderate
to
Severe



5
Poor

Frequent

Moderate
to
Severe

Asphalt

F-14



6
Fair

Frequent

Moderate



6
Fair

Frequent

Moderate

F-13

Asphalt

Pavement Surface Rating Based on Frequency and Severity Descriptions

FREQUENCY		SEVERITY								
		None	Slight	Minor	Moderate	Moderate to Severe	Severe	Very Severe	Travel is Impaired	Impas- sible
No distress is present. A single random defect per 0.10 mile is allowed.	None	10 / 9	9	-	-	-	-	-	-	-
Most of the pavement is free of distress. One or two cracks or distresses are visible for the next 0.10 mile.	Infrequent	-	8	8	8	7	7	-	-	-
Much of the pavement is free of cracking. Large blocks of distress-free pavement are present.	Infrequent to Occasional	-	8	7	7	7	6	6	-	-
Much (<1/2) to most (>1/2) of the pavement is cracked. Uncracked or undistressed blocks of pavement range from 20-30 ft per lane to 12 ft per lane.	Occasional to Frequent	-	7	7	6	6	5	5	-	-
Nearly all the pavement is cracked. Uncracked or undistressed blocks of pavement are 12 ft square or less	Frequent	-	7	6	6	5	4	3	2	1
Mostly cracked. Cracks or distress are continuous and spaced only a few feet apart.	Very Frequent	-	6	6	5	5	4	3	2	1

Slight	Cracks are tight, single and only a few feet long. Tight, single longitudinal joint cracks, partial or continuous, are included.
Minor	Cracks are generally < 1/8 inch wide, some with minor secondary cracks, no or very few connected cracks. May have a few small spalls (< 1 ft square).
Moderate	Cracks are generally >1/8 inch wide; secondary cracking is common, some cracks connected; may have some minor popouts or small (1-2 ft) to medium (3-4 ft) patching.
Moderate to Severe	Distresses vary from "Moderate" to "Severe."
Severe	Cracks are wide and/or have extensive interconnected secondary cracking; holes, loose material and/or patching are common, patches may have patches.
Very Severe	Cracks are very wide, holes and/or patching is extensive; patches extend across the full lane or extend several feet along the lane; patches on patches are common.
Travel is Impaired	Holes in pavement are large and/or pavement has so many layers of patches that the section can be traveled only at reduced speed.
Impossible	Travel by ordinary car would risk damage to the vehicle.

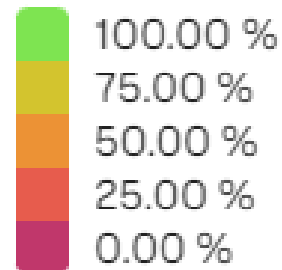
Notes: - Ratings in **blue** are the definitions from the original Pavement Rating Manual c.1981.
 - "Very Slight" from the original Manual = "Slight" here.
 - "Slight" from the original Manual = "Minor" here.



Data Analysis and Presentation Conversion

RoadAI

Road surface condition



BMTS

SURFACE CONDITION SCALE

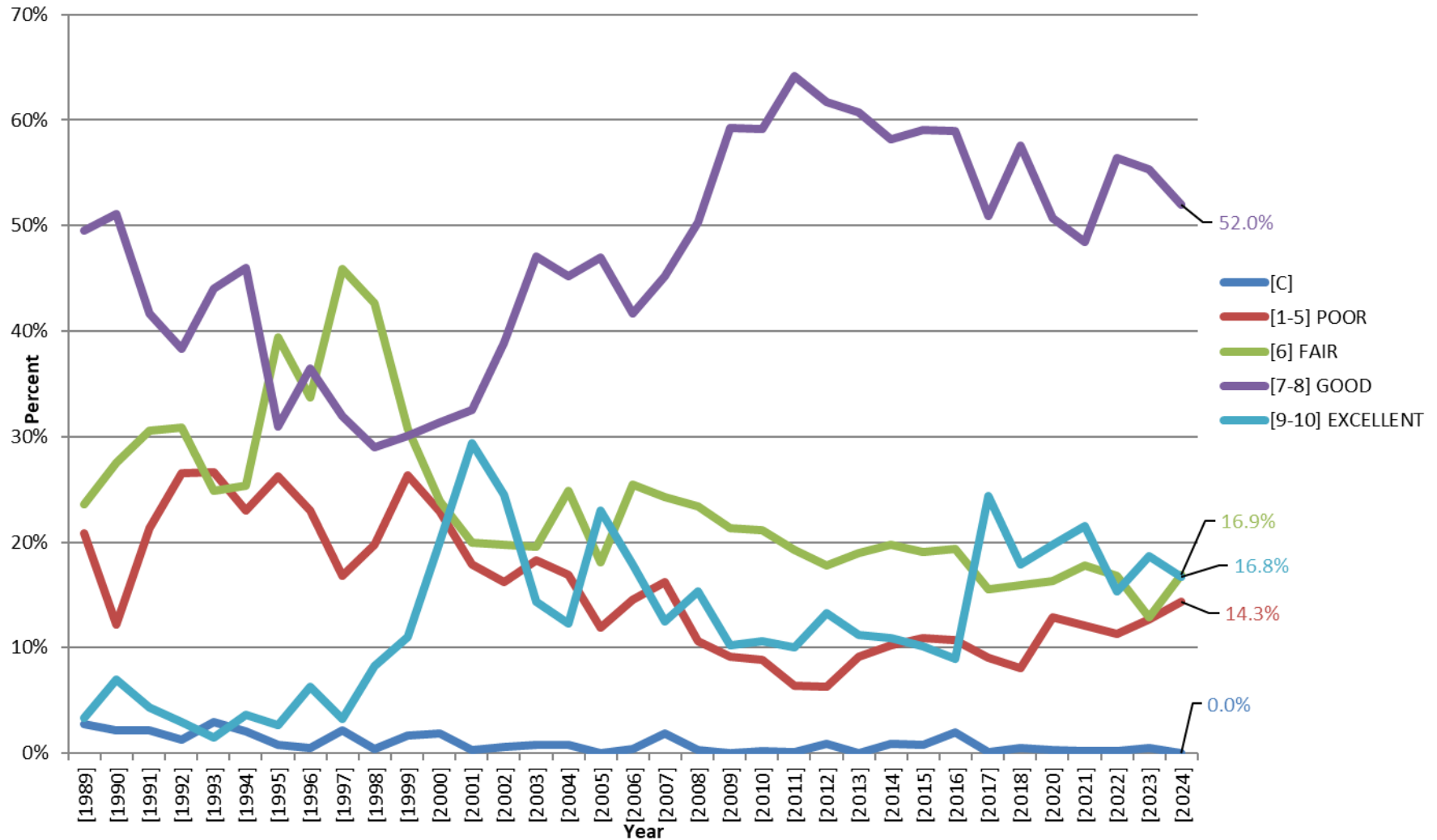
EXCELLENT	95 - 100%
GOOD	70 - 94.99%
FAIR	45.01 - 69.99%
POOR	0 - 45%

2024 Pavement Surface Conditions

Class (CL)	Mileage	Percent Mileage	Condition	
C	22.28	14.0%	EXCELLENT	
C	79.49	49.9%	GOOD	
C	32.43	20.4%	FAIR	
C	25.15	15.8%	POOR	Threshold = 25%
MA	15.77	23.3%	EXCELLENT	
MA	38.57	56.9%	GOOD	
MA	6.05	8.9%	FAIR	
MA	7.38	10.9%	POOR	Threshold = 10%
TOTAL	38.05	16.8%	EXCELLENT	
TOTAL	118.07	52.0%	GOOD	
TOTAL	38.48	16.9%	FAIR	
TOTAL	32.53	14.3%	POOR	



Percent Mileage for ALL Road Segments



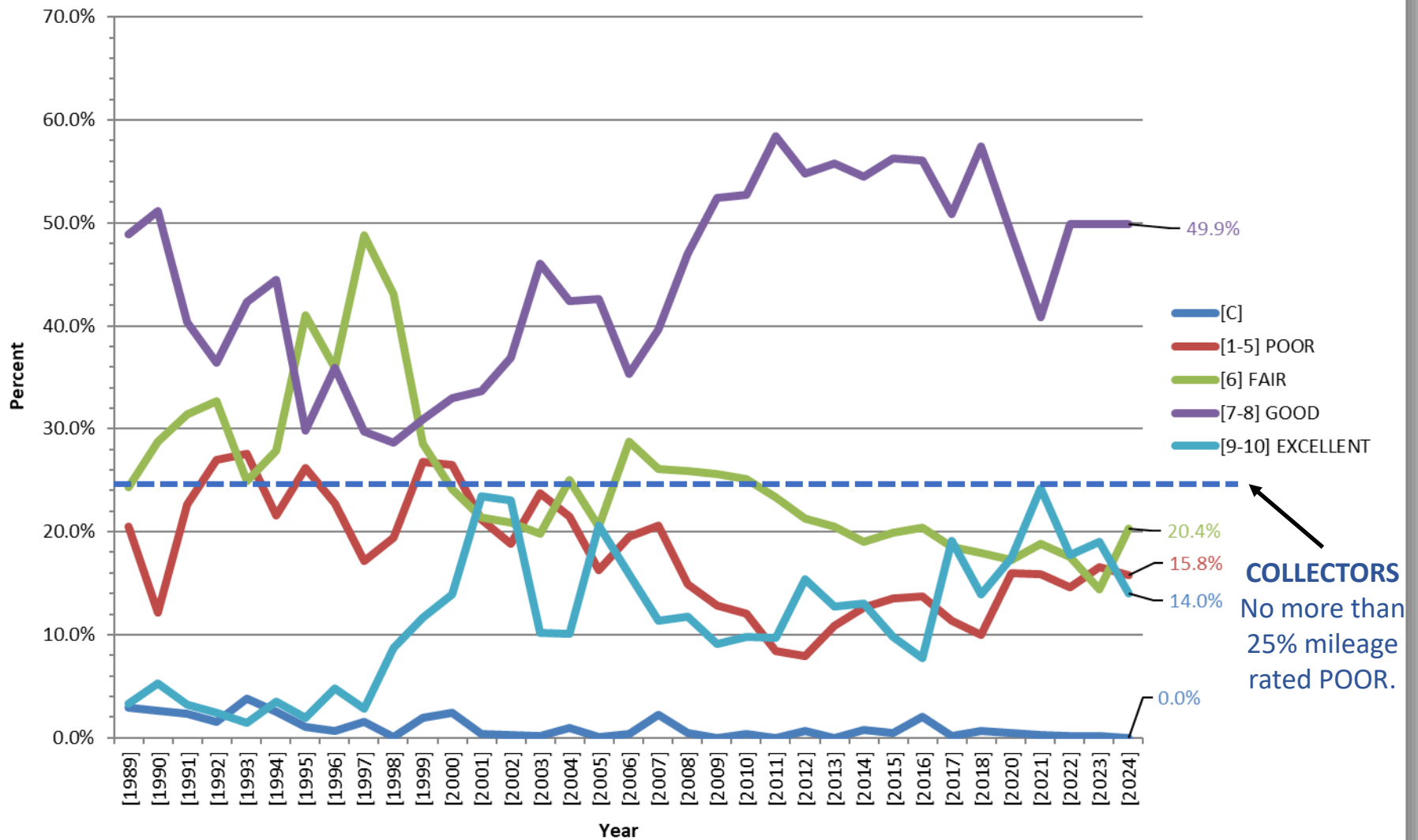


BMTS – Pavement Condition Performance Level Commitments

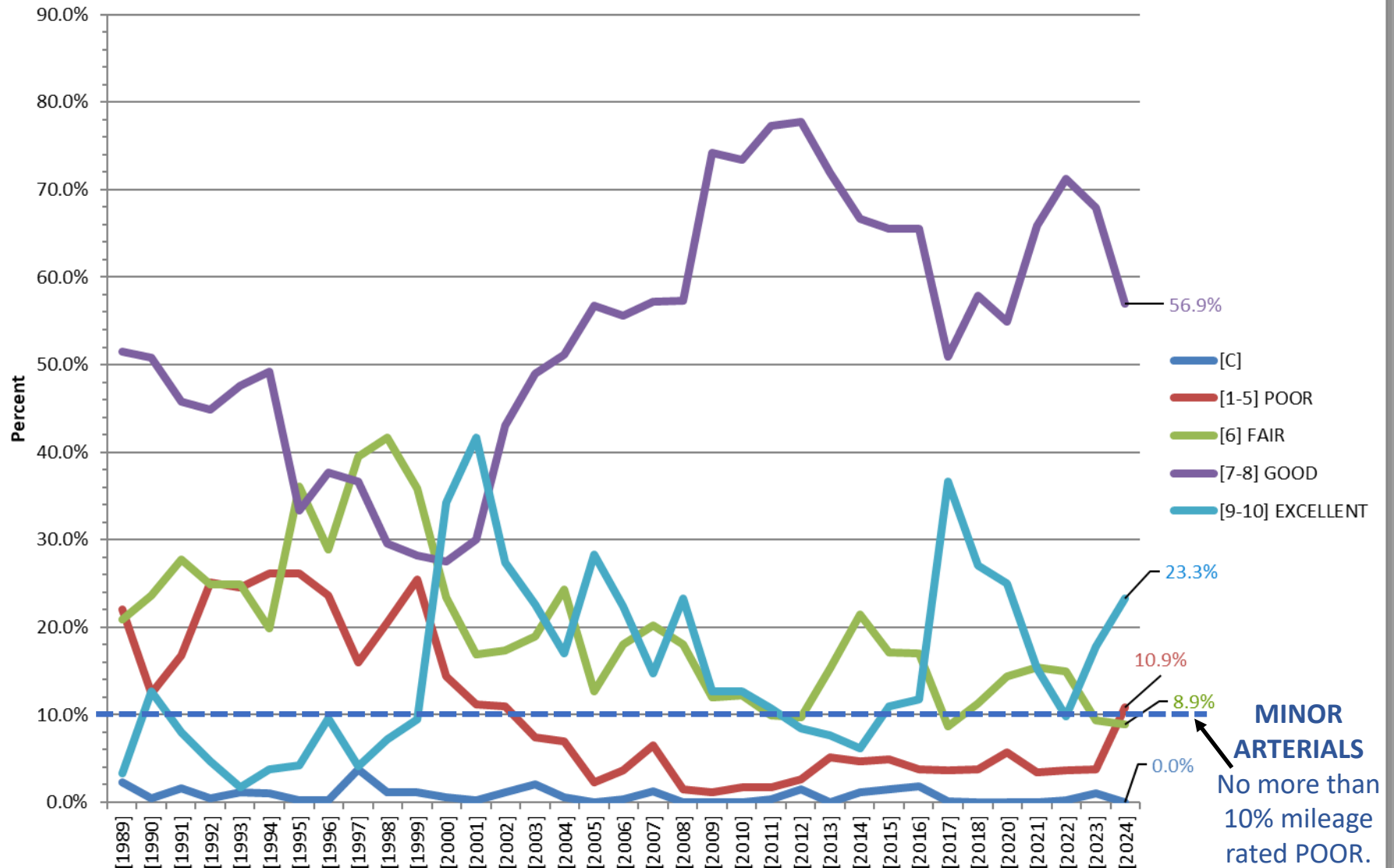
1. Maintain collector street pavement sufficiency at **no more than 25% poor**.
2. Maintain minor arterial street pavement sufficiency at **no more than 10% poor**.



Percent Mileage for COLLECTOR Road Segments



Percent Mileage for MINOR ARTERIAL Road Segments



2023 PAVEMENT SUFFICIENCY RATINGS

TOWN OF UNION
COLLECTORS RATED FAIR

2023							
ROAD NAME	ROAD SEGMENT	MUN	CL	LANES	LENGTH	SCORE	COMMENTS
HAYES AVE	NORTH ST-"VE LINE"	TU	C	2	0.18	6	
NEWELL RD	PINE ST-TAFT AVE	TU	C	2	0.47	6	
PRESCOTT AVE	BUFFALO ST-"TU LINE"	TU	C	2	0.69	6	4 Buffalo to Marjorie. 7 Marjorie to 1/2 way.

Total Segments: 3

Total Miles: 1.34

Municipal Reports

AutoSave

Off

File

Home

Insert

Page Layout

Formulas

Data

Review

View

Automate

Help

Acrobat

Calibri

11

A⁺

A⁻

B

I

U

Font Color

Align Left

Align Center

Align Right

Justify

Wrap Text

Number

\$

%

0.00

0.00

Conditional Formatting

Format as Table

Cell Styles

Insert

Delete

Format

AutoSum

Fill

Clear

Sort & Filter

Find & Select

Analyze Data

Sensitivity

Add-ins

Create PDF and Share link

Create PDF and Share via Outlook

Clipboard

Font

Alignment

Number

Styles

Cells

Editing

Analysis

Sensitivity

Add-ins

Adobe Acrobat

Municipal Report - CB 2024 • Saved to this PC

Reigle, Scott E. R5

Comments

Share

G141

✕

✓

fx

	A	B	C	D	E	F	G	H	I	J	K	L	M	N	O	P
1	ROAD_NAME	ROAD_SEGME	MUN	CL	length (feet)	length (miles)	Covered length (feet)	Covered length (miles)	Coverage	Time (UTC)	Map link	Road surface condition	Road surface condition class	Potholes	Structural distresses	Surface distresses
2	BEETHOVEN ST	LEROY ST-MAIN ST	CB	C	3535.23	0.67	3530.18	0.67	100%	2024/08/23 14:25:52	HYPERLINK	48.01%	1	No potholes	No structural distress	Moderate longitudinal cracking
3	BEETHOVEN ST	RIVERSIDE DR-LEROY ST	CB	C	1063.10	0.20	1030.18	0.20	97%	2024/08/23 14:26:30	HYPERLINK	75.15%	5	No potholes	No structural distress	No surface distress
4	BEVIER ST	BROAD ST-MOELLER ST	CB	C	282.40	0.05	282.15	0.05	100%	2024/08/20 16:02:45	HYPERLINK	96.10%	5	No potholes	No structural distress	No surface distress
5	BEVIER ST	BROWNSON ST-NYS 7NB ON RAMP	CB	C	1213.85	0.23	1207.35	0.23	99%	2024/08/20 16:01:52	HYPERLINK	80.43%	5	No potholes	No structural distress	No surface distress
6	BEVIER ST	CHENANGO ST-BROWNSON ST	CB	C	652.48	0.12	649.61	0.12	100%	2024/08/20 16:00:59	HYPERLINK	80.67%	5	No potholes	No structural distress	No surface distress
7	BEVIER ST	MOELLER ST-"CB LINE" (near Gaylord St)	CB	C	1913.99	0.36	1913.99	0.36	100%	2024/08/20 16:03:32	HYPERLINK	98.08%	5	No potholes	No structural distress	No surface distress
8	BEVIER ST	NYS 7NB ON RAMP-BROAD ST	CB	C	1219.34	0.23	1219.34	0.23	100%	2024/08/20 16:02:36	HYPERLINK	83.55%	5	No potholes	No structural distress	No surface distress
9	BIGELOW ST	COURT ST-ROBINSON ST	CB	C	1358.96	0.26	1345.14	0.25	99%	2024/08/20 15:00:08	HYPERLINK	87.26%	5	No potholes	No structural distress	No surface distress
10	BIGELOW ST	FRENCH CT-WHITING ST	CB	C	519.43	0.10	518.37	0.10	100%	2024/08/20 16:04:10	HYPERLINK	97.94%	5	No potholes	No structural distress	No surface distress
11	BIGELOW ST	ROBINSON ST-FRENCH CT	CB	C	1962.97	0.37	1955.38	0.37	100%	2024/08/20 16:04:59	HYPERLINK	86.89%	5	No potholes	No structural distress	No surface distress
12	BIGELOW ST	WHITING ST-"CB LINE"	CB	C	110.27	0.02	110.27	0.02	100%	2024/08/20 16:03:59	HYPERLINK	100.00%	5	No potholes	No structural distress	No surface distress
13	BROAD AVE	BEVIER ST-EAST FREDERICK ST	CB	C	2874.93	0.54	2874.93	0.54	100%	2024/08/20 15:05:06	HYPERLINK	89.08%	5	No potholes	No structural distress	No surface distress
14	BROAD AVE	EAST FREDERICK ST-ROBINSON ST	CB	C	1402.32	0.27	1391.07	0.26	99%	2024/08/20 15:05:33	HYPERLINK	83.48%	5	No potholes	No structural distress	No surface distress
15	BROAD AVE	ROBINSON ST-COURT ST	CB	C	1232.34	0.23	1232.34	0.23	100%	2024/08/20 15:06:57	HYPERLINK	65.58%	5	No potholes	No structural distress	Moderate longitudinal cracking
16	BURR AVE	"CB LINE"-CONKLIN AVE	CB	C	2288.83	0.43	2288.83	0.43	100%	2024/08/02 16:37:17	HYPERLINK	95.36%	5	No potholes	No structural distress	No surface distress
17	CARROLL ST	COURT ST-HAWLEY ST	CB	C	606.18	0.11	597.11	0.11	99%	2024/08/21 13:54:57	HYPERLINK	87.77%	5	No potholes	No structural distress	No surface distress
18	CARROLL ST	HAWLEY ST-SUSQUEHANNA ST	CB	C	618.41	0.12	616.80	0.12	100%	2024/08/21 13:53:53	HYPERLINK	14.10%	1	No potholes	Alligator cracking	Moderate longitudinal cracking
19	CARROLL ST	HENRY ST-COURT ST	CB	C	616.06	0.12	570.87	0.11	93%	2024/08/21 13:55:17	HYPERLINK	27.72%	1	No potholes	Alligator cracking	No surface distress
20	CARROLL ST	SUSQUEHANNA ST-CARROLL ST RAMP	CB	C	308.35	0.06	308.35	0.06	100%	2024/08/21 13:53:20	HYPERLINK	41.13%	4	No potholes	No structural distress	Moderate longitudinal cracking
21	CARROLL ST RAMP	CARROLL ST-NYS 363	CB	C	326.39	0.06	321.52	0.06	99%	2024/08/21 13:46:20	HYPERLINK	76.10%	5	No potholes	No structural distress	Moderate transverse cracking
22	CHENANGO ST	"CB LINE"-BEVIER ST	CB	C	2896.69	0.55	2893.70	0.55	100%	2024/08/20 15:39:48	HYPERLINK	93.40%	5	No potholes	No structural distress	No surface distress
23	CLIFTON BLVD	FULLER HOLLOW RD-JUTLAND RD	CB	C	513.64	0.10	452.76	0.09	88%	2024/08/21 15:32:40	HYPERLINK	21.57%	1	No potholes	Alligator cracking	Moderate longitudinal cracking
24	CLINTON ST	EAST CLINTON ST-MYGATT ST	CB	C	1498.90	0.28	1496.06	0.28	100%	2024/08/23 15:35:27	HYPERLINK	81.22%	5	No potholes	No structural distress	No surface distress
25	CLINTON ST	JARVIS ST-GLENWOOD AVE	CB	C	2914.74	0.55	2906.82	0.55	100%	2024/08/23 15:34:04	HYPERLINK	89.63%	5	No potholes	No structural distress	No surface distress
26	CLINTON ST	MYGATT ST-JARVIS ST	CB	C	1999.83	0.38	1988.19	0.38	99%	2024/08/23 15:34:54	HYPERLINK	87.55%	5	No potholes	No structural distress	No surface distress
27	EAST CLINTON ST	FRONT ST-CLINTON ST	CB	C	373.75	0.07	367.45	0.07	98%	2024/08/23 15:36:09	HYPERLINK	58.52%	5	No potholes	No structural distress	Moderate longitudinal cracking
28	EAST CLINTON ST	WASHINGTON ST-WATER ST	CB	C	279.44	0.05	279.44	0.05	100%	2024/08/23 15:37:20	HYPERLINK	1.29%	1	No potholes	Alligator cracking	Moderate longitudinal cracking
29	EAST CLINTON ST	WATER ST-FRONT ST	CB	C	841.08	0.16	839.89	0.16	100%	2024/08/23 15:39:11	HYPERLINK	60.98%	5	No potholes	No structural distress	No surface distress
30	ELDRIDGE ST	WATER ST-BRANDYWINE AVE	CB	C	3720.73	0.70	3720.73	0.70	100%	2024/08/20 16:26:26	HYPERLINK	90.35%	5	No potholes	No structural distress	No surface distress
31	EXCHANGE ST	COURT ST-HAWLEY ST	CB	C	648.98	0.12	648.98	0.12	100%	2024/08/21 14:03:51	HYPERLINK	32.11%	1	No potholes	Alligator cracking	Moderate longitudinal cracking
32	EXCHANGE ST	HAWLEY ST-SUSQUEHANNA ST	CB	C	610.12	0.12	610.12	0.12	100%	2024/08/21 14:04:32	HYPERLINK	25.45%	1	No potholes	No structural distress	Moderate longitudinal cracking

By ROAD_NAME & CL

By Road surface condition

Info

+

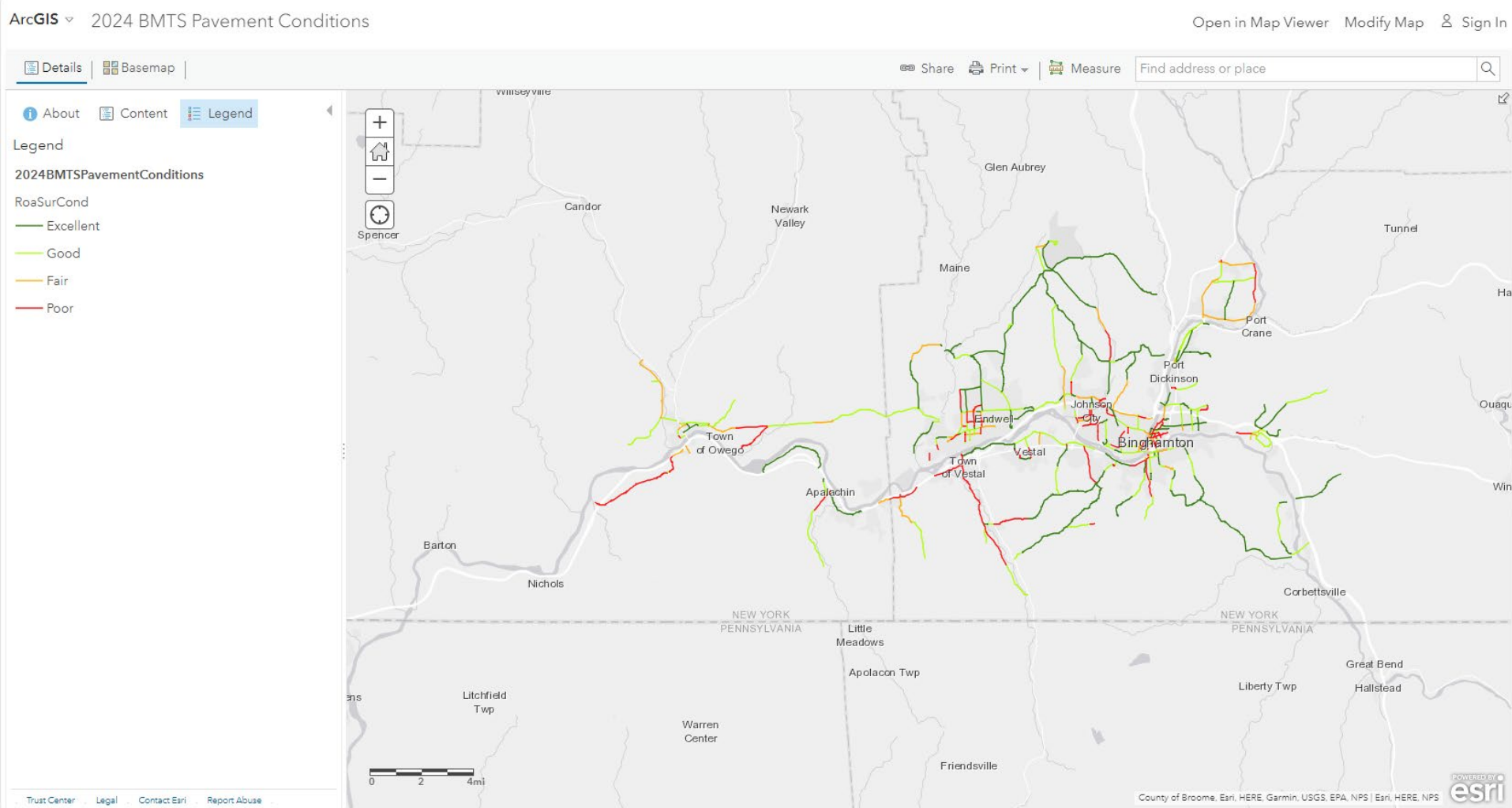
Municipal Reports

AutoSave Off										Municipal Report - CB 2024 - Saved to this PC										Reigle, Scott E. RS									
File Home Insert Page Layout Formulas Data Review View Automate Help Acrobat										Search										Comments Share									
Clipboard Font Alignment Number Styles Cells Editing Analysis Sensitivity Add-ins Adobe Acrobat																													
G140																													
ROAD_NAME ROAD_SEGME																													
MUN CL																													
Length (feet) length (miles) Covered length (feet) Covered length (miles) Coverage																													
Time (UTC) Map link Road surface condition Road surface condition class Potholes Structural distresses Surface distresses																													
98	PARK AVE	ROSS PARK ZOO ENT-MORGAN RD	CB	C	78.60	0.01	72.18	0.01	92%	2024/08/02 17:04:27	HYPERLINK	2.11%	1	No potholes	Alligator cracking	Moderate longitudinal cracking													
99	LAKE AVE	GLENWOOD AVE-MARKET ST	CB	C	1813.29	0.34	1778.21	0.34	98%	2024/08/23 15:23:31	HYPERLINK	1.81%	1	No potholes	Alligator cracking	Moderate longitudinal cracking													
100	EAST CLINTON ST	WASHINGTON ST-WATER ST	CB	C	279.44	0.05	279.44	0.05	100%	2024/08/23 15:37:20	HYPERLINK	1.29%	1	No potholes	Alligator cracking	Moderate longitudinal cracking													
101	WASHINGTON ST	EAST CLINTON ST-LEWIS ST	CB	C	228.29	0.04	196.85	0.04	86%	2024/08/20 16:34:48	HYPERLINK	0.00%	1	No potholes	Alligator cracking	Moderate longitudinal cracking													
102	STATE ST	HENRY ST-LEWIS ST	CB	MA	951.56	0.18	938.32	0.18	99%	2024/08/20 15:56:23	HYPERLINK	98.81%	5	No potholes	No structural distress	No surface distress													
103	PENNSYLVANIA AV	HOTCHKISS ST-CROSS ST	CB	MA	932.33	0.18	931.76	0.18	100%	2024/08/02 17:21:43	HYPERLINK	98.70%	5	No potholes	No structural distress	No surface distress													
104	RIVERSIDE DR	"CB LINE"-WEST END AVE	CB	MA	791.73	0.15	791.73	0.15	100%	2024/08/23 14:40:14	HYPERLINK	96.75%	5	No potholes	No structural distress	No surface distress													
105	PENNSYLVANIA AV	CROSS ST-VESTAL AVE	CB	MA	1792.45	0.34	1791.34	0.34	100%	2024/08/02 17:21:11	HYPERLINK	96.07%	5	No potholes	No structural distress	No surface distress													
106	BEVIER ST	"CB LINE"-CHENANGO ST	CB	MA	760.22	0.14	748.03	0.14	98%	2024/07/30 18:42:05	HYPERLINK	91.65%	5	No potholes	No structural distress	No surface distress													
107	RIVERSIDE DR	HELEN ST-BEETHOVEN ST	CB	MA	1571.07	0.30	1555.12	0.29	99%	2024/08/23 14:42:06	HYPERLINK	91.26%	5	No potholes	No structural distress	No surface distress													
108	RIVERSIDE DR	WEST END AVE-HELEN ST	CB	MA	2129.88	0.40	2119.42	0.40	100%	2024/08/23 14:40:57	HYPERLINK	89.96%	5	No potholes	No structural distress	No surface distress													
109	CONKLIN AVE	JOHN ST-TOMPKINS ST	CB	MA	1740.70	0.33	1738.84	0.33	100%	2024/08/21 14:10:08	HYPERLINK	88.37%	5	No potholes	No structural distress	No surface distress													
110	RIVERSIDE DR	OAK ST-FRONT ST	CB	MA	736.21	0.14	721.78	0.14	98%	2024/08/23 14:44:02	HYPERLINK	87.40%	5	No potholes	No structural distress	No surface distress													
111	CONKLIN AVE	S WASHINGTON ST-EXCHANGE ST	CB	MA	1966.76	0.37	1966.76	0.37	100%	2024/08/21 14:22:28	HYPERLINK	86.89%	5	No potholes	No structural distress	No surface distress													
112	PENNSYLVANIA AV	"CB LINE"-HOTCHKISS ST	CB	MA	3277.57	0.62	3277.57	0.62	100%	2024/08/02 17:23:54	HYPERLINK	83.88%	5	No potholes	No structural distress	No surface distress													
113	RIVERSIDE DR	BEETHOVEN ST-OAK ST	CB	MA	3358.12	0.64	3358.12	0.64	100%	2024/08/23 14:43:28	HYPERLINK	74.29%	5	No potholes	No structural distress	No surface distress													
114	EXCHANGE ST	NYS 363-CONKLIN AVE	CB	MA	771.99	0.15	754.59	0.14	98%	2024/08/23 14:40:26	HYPERLINK	74.08%	5	No potholes	No structural distress	No surface distress													
115	RIVERSIDE DR	FRONT ST-WASHINGTON ST	CB	MA	1251.15	0.24	1207.35	0.23	96%	2024/08/23 14:44:45	HYPERLINK	71.90%	4	No potholes	No structural distress	No surface distress													
116	CHENANGO ST	ELDRIDGE ST-LEWIS ST	CB	MA	940.93	0.18	938.32	0.18	100%	2024/08/20 16:17:24	HYPERLINK	71.56%	5	No potholes	No structural distress	No surface distress													
117	CONKLIN AVE	EXCHANGE ST-HIGH ST	CB	MA	540.68	0.10	540.68	0.10	100%	2024/08/21 14:22:42	HYPERLINK	65.17%	4	No potholes	No structural distress	No surface distress													
118	STATE ST	COURT ST-HENRY ST	CB	MA	671.38	0.13	669.29	0.13	100%	2024/08/20 15:55:53	HYPERLINK	63.43%	5	No potholes	No structural distress	No surface distress													
119	CONKLIN AVE	TELEGRAPH ST-JOHN ST	CB	MA	483.11	0.09	483.11	0.09	100%	2024/08/21 14:10:23	HYPERLINK	62.97%	5	No potholes	No structural distress	Bleeding													
120	PENNSYLVANIA AV	VESTAL AVE-NYS 434	CB	MA	589.32	0.11	589.32	0.11	100%	2024/08/02 17:20:03	HYPERLINK	62.82%	5	No potholes	No structural distress	Moderate longitudinal cracking													
121	CHENANGO ST	HENRY ST-COURT ST	CB	MA	796.06	0.15	793.96	0.15	100%	2024/08/21 14:03:14	HYPERLINK	61.64%	4	No potholes	No structural distress	No surface distress													
122	CONKLIN AVE	HIGH ST-TELEGRAPH ST	CB	MA	1031.79	0.20	1023.62	0.19	99%	2024/08/21 14:23:42	HYPERLINK	61.49%	4	No potholes	No structural distress	No surface distress													
123	CHENANGO ST	BEVIER ST-WEST STATE ST (@ Irving Ave.)	CB	MA	2646.66	0.50	2578.74	0.49	97%	2024/08/20 16:00:38	HYPERLINK	53.01%	5	No potholes	No structural distress	Moderate longitudinal cracking													
124	WEST STATE ST	CHENANGO ST / STATE ST (@ Irving Ave.)-FREDERICK ST	CB	MA	234.56	0.04	223.10	0.04	95%	2024/08/20 15:59:30	HYPERLINK	50.90%	4	No potholes	No structural distress	Moderate longitudinal cracking													
125	FRONT ST	LEROV ST-RIVERSIDE DR	CB	MA	751.26	0.14	728.35	0.14	97%	2024/08/23 14:10:31	HYPERLINK	41.97%	1	No potholes	No structural distress	Moderate longitudinal cracking													
126	FRONT ST	MAIN ST-LEROY ST	CB	MA	1444.68	0.27	1437.01	0.27	99%	2024/08/23 15:00:10	HYPERLINK	41.84%	1	No potholes	No structural distress	Moderate longitudinal cracking													
127	WEST STATE ST	STATE ST-CHENANGO ST	CB	MA	1613.47	0.31	1613.47	0.31	100%	2024/08/20 16:19:07	HYPERLINK	41.67%	4	No potholes	Alligator cracking	Moderate longitudinal cracking													
128	WEST STATE ST	FREDERICK ST-CHENANGO ST	CB	MA	446.27	0.08	446.19	0.08	100%	2024/08/20 15:59:22	HYPERLINK	34.82%	3	No potholes	Alligator cracking	Moderate longitudinal cracking													
129	CHENANGO ST	DOUBLEDAY ST-ELDREDGE ST	CB	MA	446.45	0.08	439.63	0.08	98%	2024/08/20 16:17:35	HYPERLINK	14.45%	1	No potholes	Alligator cracking	Moderate longitudinal cracking													
130	STATE ST	LEWIS ST-WEST STATE ST	CB	MA	1620.37	0.31	1620.37	0.31	100%	2024/08/20 16:19:52	HYPERLINK	14.20%	1	No potholes	Alligator cracking	Moderate longitudinal cracking													
By ROAD_NAME & CL										By Road surface condition Info																			

Municipal Reports

TOTAL MILES	33.12			
C TOTAL MILES	25.74			
MA TOTAL MILES	7.37			
			<u>SURFACE CONDITION SCALE</u>	
			EXCELLENT	95 - 100%
			GOOD	70 - 94.99%
			FAIR	45.01 - 69.99%
			POOR	0 - 45%
Class (CL)	Mileage	Percent Mileage	Condition	
C	3.67	14.3%	EXCELLENT	
C	12.48	48.5%	GOOD	
C	4.62	18.0%	FAIR	
C	4.97	19.3%	POOR	
MA	0.85	11.5%	EXCELLENT	
MA	3.50	47.5%	GOOD	
MA	1.32	18.0%	FAIR	
MA	1.70	23.0%	POOR	
TOTAL	4.52	13.6%	EXCELLENT	
TOTAL	15.98	48.3%	GOOD	
TOTAL	5.95	18.0%	FAIR	
TOTAL	6.67	20.1%	POOR	

2024 Pavement Ratings for Local Federal Aid Roads



<https://arcg.is/1XSLq5>

Pavement Condition Information will be Available Online

<https://bmtsonline.com/data/pavement-ratings>

Evaluation of RoadAI

- Are we obtaining reliable pavement condition data?
- Is the data collection process significantly improved?
- Is the data reporting process significantly improved?
- Broome County DPW assessment?
- Compare to what other municipalities are doing?
Avoid duplication as much as possible.
- Do we drop sign and/or pavement marking capture in the next contract year?