

BMTS PAVEMENT SUFFICIENCY RATINGS (1989-2024)
NON-STATE FAUS ROADWAYS



MILEAGE FOR ALL ROAD SEGMENTS

	[C]	[1-5] POOR	[6] FAIR	[7-8] GOOD	[9-10] EXCELLENT	SUM
[1989]	3.40	25.47	28.77	60.43	4.05	122.12
[1990]	2.64	14.91	33.66	62.38	8.53	122.12
[1991]	2.66	26.04	37.33	50.83	5.26	122.12
[1992]	1.59	32.38	37.71	46.86	3.58	122.12
[1993]	5.48	49.02	45.89	81.02	2.78	184.19
[1994]	3.77	42.42	46.66	84.66	6.68	184.19
[1995]	1.44	48.25	72.62	56.97	4.91	184.19
[1996]	0.93	42.45	62.05	67.17	11.59	184.19
[1997]	4.11	31.26	85.40	59.41	5.99	186.17
[1998]	0.77	38.82	83.71	56.85	16.17	196.32
[1999]	3.34	51.80	60.41	59.12	21.65	196.32
[2000]	3.59	44.88	46.98	61.53	39.34	196.32
[2001]	0.67	38.83	43.12	70.40	63.56	216.58
[2002]	1.27	35.15	42.82	84.36	52.98	216.58
[2003]	1.68	38.88	41.56	99.90	30.42	212.44
[2004]	1.76	37.52	54.98	100.11	27.12	221.49
[2005]	0.03	26.29	39.95	103.98	50.98	221.23
[2006]	0.83	32.24	56.24	92.26	39.66	221.23
[2007]	4.21	35.86	53.69	99.95	27.52	221.23
[2008]	0.64	23.58	51.83	111.24	33.94	221.23
[2009]	0.00	20.19	47.26	131.07	22.71	221.23
[2010]	0.53	19.81	47.27	132.34	23.85	223.80
[2011]	0.21	14.60	44.02	146.38	22.87	228.08
[2012]	2.01	14.44	40.52	140.81	30.30	228.08
[2013]	0.00	20.82	43.24	138.45	25.57	228.08
[2014]	1.99	23.32	45.09	132.70	24.98	228.08
[2015]	1.82	24.87	43.50	134.77	23.12	228.08
[2016]	4.51	24.41	44.26	134.45	20.45	228.08
[2017]	0.31	20.56	35.51	116.04	55.66	228.08
[2018]	1.06	18.51	36.38	131.24	40.89	228.08
[2020]	0.67	29.31	37.33	115.72	45.05	228.08
[2021]	0.41	27.54	40.53	110.48	49.12	228.08
[2022]	0.44	25.75	38.28	128.60	35.01	228.08
[2023]	1.05	28.89	29.34	126.25	42.55	228.08
[2024]	0.00	32.53	38.48	118.07	38.05	227.13

RoadAI

PERCENT MILEAGE FOR ALL ROAD SEGMENTS *

	[C]	[1-5] POOR	[6] FAIR	[7-8] GOOD	[9-10] EXCELLENT
[1989]	2.8%	20.9%	23.6%	49.5%	3.3%
[1990]	2.2%	12.2%	27.6%	51.1%	7.0%
[1991]	2.2%	21.3%	30.6%	41.6%	4.3%
[1992]	1.3%	26.5%	30.9%	38.4%	2.9%
[1993]	3.0%	26.6%	24.9%	44.0%	1.5%
[1994]	2.0%	23.0%	25.3%	46.0%	3.6%
[1995]	0.8%	26.2%	39.4%	30.9%	2.7%
[1996]	0.5%	23.0%	33.7%	36.5%	6.3%
[1997]	2.2%	16.8%	45.9%	31.9%	3.2%
[1998]	0.4%	19.8%	42.6%	29.0%	8.2%
[1999]	1.7%	26.4%	30.8%	30.1%	11.0%
[2000]	1.8%	22.9%	23.9%	31.3%	20.0%
[2001]	0.3%	17.9%	19.9%	32.5%	29.3%
[2002]	0.6%	16.2%	19.8%	39.0%	24.5%
[2003]	0.8%	18.3%	19.6%	47.0%	14.3%
[2004]	0.8%	16.9%	24.8%	45.2%	12.2%
[2005]	0.0%	11.9%	18.1%	47.0%	23.0%
[2006]	0.4%	14.6%	25.4%	41.7%	17.9%
[2007]	1.9%	16.2%	24.3%	45.2%	12.4%
[2008]	0.3%	10.7%	23.4%	50.3%	15.3%
[2009]	0.0%	9.1%	21.4%	59.2%	10.3%
[2010]	0.2%	8.9%	21.1%	59.1%	10.7%
[2011]	0.1%	6.4%	19.3%	64.2%	10.0%
[2012]	0.9%	6.3%	17.8%	61.7%	13.3%
[2013]	0.0%	9.1%	19.0%	60.7%	11.2%
[2014]	0.9%	10.2%	19.8%	58.2%	11.0%
[2015]	0.8%	10.9%	19.1%	59.1%	10.1%
[2016]	2.0%	10.7%	19.4%	58.9%	9.0%
[2017]	0.1%	9.0%	15.6%	50.9%	24.4%
[2018]	0.5%	8.1%	16.0%	57.5%	17.9%
[2020]	0.3%	12.9%	16.4%	50.7%	19.8%
[2021]	0.2%	12.1%	17.8%	48.4%	21.5%
[2022]	0.2%	11.3%	16.8%	56.4%	15.3%
[2023]	0.5%	12.7%	12.9%	55.4%	18.7%
[2024]	0.0%	14.3%	16.9%	52.0%	16.8%

RoadAI

MILEAGE FOR **COLLECTOR** SEGMENTS

	[C]	[1-5] POOR	[6] FAIR	[7-8] GOOD	[9-10] EXCELLENT	SUM
[1989]	2.76	19.25	22.90	45.93	3.11	93.95
[1990]	2.50	11.40	27.01	48.08	4.96	93.95
[1991]	2.21	21.31	29.51	37.92	3.00	93.95
[1992]	1.45	25.32	30.70	34.22	2.26	93.95
[1993]	4.80	34.51	31.19	52.91	1.75	125.16
[1994]	3.17	27.02	34.92	55.61	4.44	125.16
[1995]	1.30	32.82	51.33	37.29	2.42	125.16
[1996]	0.79	28.51	44.98	44.94	5.94	125.16
[1997]	1.93	21.86	62.26	37.90	3.59	127.54
[1998]	0.12	26.72	59.18	39.44	11.95	137.41
[1999]	2.69	36.83	39.26	42.54	16.09	137.41
[2000]	3.27	36.44	33.19	45.35	19.16	137.41
[2001]	0.53	30.95	31.20	49.20	34.21	146.09
[2002]	0.43	27.45	30.55	53.99	33.67	146.09
[2003]	0.23	33.71	28.24	65.52	14.54	142.24
[2004]	1.40	32.69	38.09	64.56	15.31	152.05
[2005]	0.03	24.70	31.14	64.69	31.37	151.93
[2006]	0.57	29.70	43.73	53.74	24.19	151.93
[2007]	3.34	31.33	39.66	60.28	17.32	151.93
[2008]	0.64	22.59	39.36	71.51	17.83	151.93
[2009]	0.00	19.44	38.97	79.62	13.90	151.93
[2010]	0.53	18.62	38.77	81.49	15.09	154.50
[2011]	0.00	13.41	37.11	92.81	15.45	158.78
[2012]	1.01	12.60	33.76	86.97	24.44	158.78
[2013]	0.00	17.26	32.62	88.61	20.29	158.78
[2014]	1.20	20.11	30.25	86.52	20.70	158.78
[2015]	0.80	21.44	31.67	89.34	15.53	158.78
[2016]	3.25	21.80	32.44	89.02	12.27	158.78
[2017]	0.21	18.05	29.47	80.75	30.30	158.78
[2018]	1.06	15.93	28.54	91.14	22.11	158.78
[2020]	0.67	25.36	27.33	77.67	27.75	158.78
[2021]	0.41	25.16	29.86	64.84	38.51	158.78
[2022]	0.26	23.21	27.90	79.22	28.19	158.78
[2023]	0.31	26.28	22.84	79.17	30.18	158.78
[2024]	0.00	25.15	32.43	79.49	22.28	159.35

RoadAI

PERCENT MILEAGE FOR **COLLECTOR** SEGMENTS *

	[C]	[1-5] POOR	[6] FAIR	[7-8] GOOD	[9-10] EXCELLENT
[1989]	2.9%	20.5%	24.4%	48.9%	3.3%
[1990]	2.7%	12.1%	28.7%	51.2%	5.3%
[1991]	2.4%	22.7%	31.4%	40.4%	3.2%
[1992]	1.5%	27.0%	32.7%	36.4%	2.4%
[1993]	3.8%	27.6%	24.9%	42.3%	1.4%
[1994]	2.5%	21.6%	27.9%	44.4%	3.5%
[1995]	1.0%	26.2%	41.0%	29.8%	1.9%
[1996]	0.6%	22.8%	35.9%	35.9%	4.7%
[1997]	1.5%	17.1%	48.8%	29.7%	2.8%
[1998]	0.1%	19.4%	43.1%	28.7%	8.7%
[1999]	2.0%	26.8%	28.6%	31.0%	11.7%
[2000]	2.4%	26.5%	24.2%	33.0%	13.9%
[2001]	0.4%	21.2%	21.4%	33.7%	23.4%
[2002]	0.3%	18.8%	20.9%	37.0%	23.0%
[2003]	0.2%	23.7%	19.9%	46.1%	10.2%
[2004]	0.9%	21.5%	25.1%	42.5%	10.1%
[2005]	0.0%	16.3%	20.5%	42.6%	20.6%
[2006]	0.4%	19.5%	28.8%	35.4%	15.9%
[2007]	2.2%	20.6%	26.1%	39.7%	11.4%
[2008]	0.4%	14.9%	25.9%	47.1%	11.7%
[2009]	0.0%	12.8%	25.6%	52.4%	9.1%
[2010]	0.3%	12.1%	25.1%	52.7%	9.8%
[2011]	0.0%	8.4%	23.4%	58.5%	9.7%
[2012]	0.6%	7.9%	21.3%	54.8%	15.4%
[2013]	0.0%	10.9%	20.5%	55.8%	12.8%
[2014]	0.8%	12.7%	19.1%	54.5%	13.0%
[2015]	0.5%	13.5%	19.9%	56.3%	9.8%
[2016]	2.0%	13.7%	20.4%	56.1%	7.7%
[2017]	0.1%	11.4%	18.6%	50.9%	19.1%
[2018]	0.7%	10.0%	18.0%	57.4%	13.9%
[2020]	0.4%	16.0%	17.2%	48.9%	17.5%
[2021]	0.3%	15.8%	18.8%	40.8%	24.3%
[2022]	0.2%	14.6%	17.6%	49.9%	17.8%
[2023]	0.2%	16.6%	14.4%	49.9%	19.0%
[2024]	0.0%	15.8%	20.4%	49.9%	14.0%

RoadAI

MILEAGE FOR MINOR ARTERIAL SEGMENTS

	[C]	[1-5] POOR	[6] FAIR	[7-8] GOOD	[9-10] EXCELLENT	SUM
[1989]	0.64	6.22	5.87	14.50	0.94	28.17
[1990]	0.14	3.51	6.65	14.30	3.57	28.17
[1991]	0.45	4.73	7.82	12.91	2.26	28.17
[1992]	0.14	7.06	7.01	12.64	1.32	28.17
[1993]	0.68	14.51	14.70	28.11	1.03	59.03
[1994]	0.60	15.40	11.74	29.05	2.24	59.03
[1995]	0.14	15.43	21.29	19.68	2.49	59.03
[1996]	0.14	13.94	17.07	22.23	5.65	59.03
[1997]	2.18	9.40	23.14	21.51	2.40	58.63
[1998]	0.65	12.10	24.53	17.41	4.22	58.91
[1999]	0.65	14.97	21.15	16.58	5.56	58.91
[2000]	0.32	8.44	13.79	16.18	20.18	58.91
[2001]	0.14	7.88	11.92	21.20	29.35	70.49
[2002]	0.84	7.70	12.27	30.37	19.31	70.49
[2003]	1.45	5.17	13.32	34.38	15.88	70.20
[2004]	0.36	4.83	16.89	35.55	11.81	69.44
[2005]	0.00	1.59	8.81	39.29	19.61	69.30
[2006]	0.26	2.54	12.51	38.52	15.47	69.30
[2007]	0.87	4.53	14.03	39.67	10.20	69.30
[2008]	0.00	0.99	12.47	39.73	16.11	69.30
[2009]	0.00	0.75	8.29	51.45	8.81	69.30
[2010]	0.00	1.19	8.50	50.85	8.76	69.30
[2011]	0.21	1.19	6.91	53.57	7.42	69.30
[2012]	1.00	1.84	6.76	53.84	5.86	69.30
[2013]	0.00	3.56	10.62	49.84	5.28	69.30
[2014]	0.79	3.21	14.84	46.18	4.28	69.30
[2015]	1.02	3.43	11.83	45.43	7.59	69.30
[2016]	1.26	2.61	11.82	45.43	8.18	69.30
[2017]	0.10	2.51	6.04	35.29	25.36	69.30
[2018]	0.00	2.58	7.84	40.10	18.78	69.30
[2020]	0.00	3.95	10.00	38.05	17.30	69.30
[2021]	0.00	2.38	10.67	45.64	10.61	69.30
[2022]	0.18	2.54	10.38	49.38	6.82	69.30
[2023]	0.74	2.61	6.50	47.08	12.37	69.30
[2024]	0.00	7.38	6.05	38.57	15.77	67.77

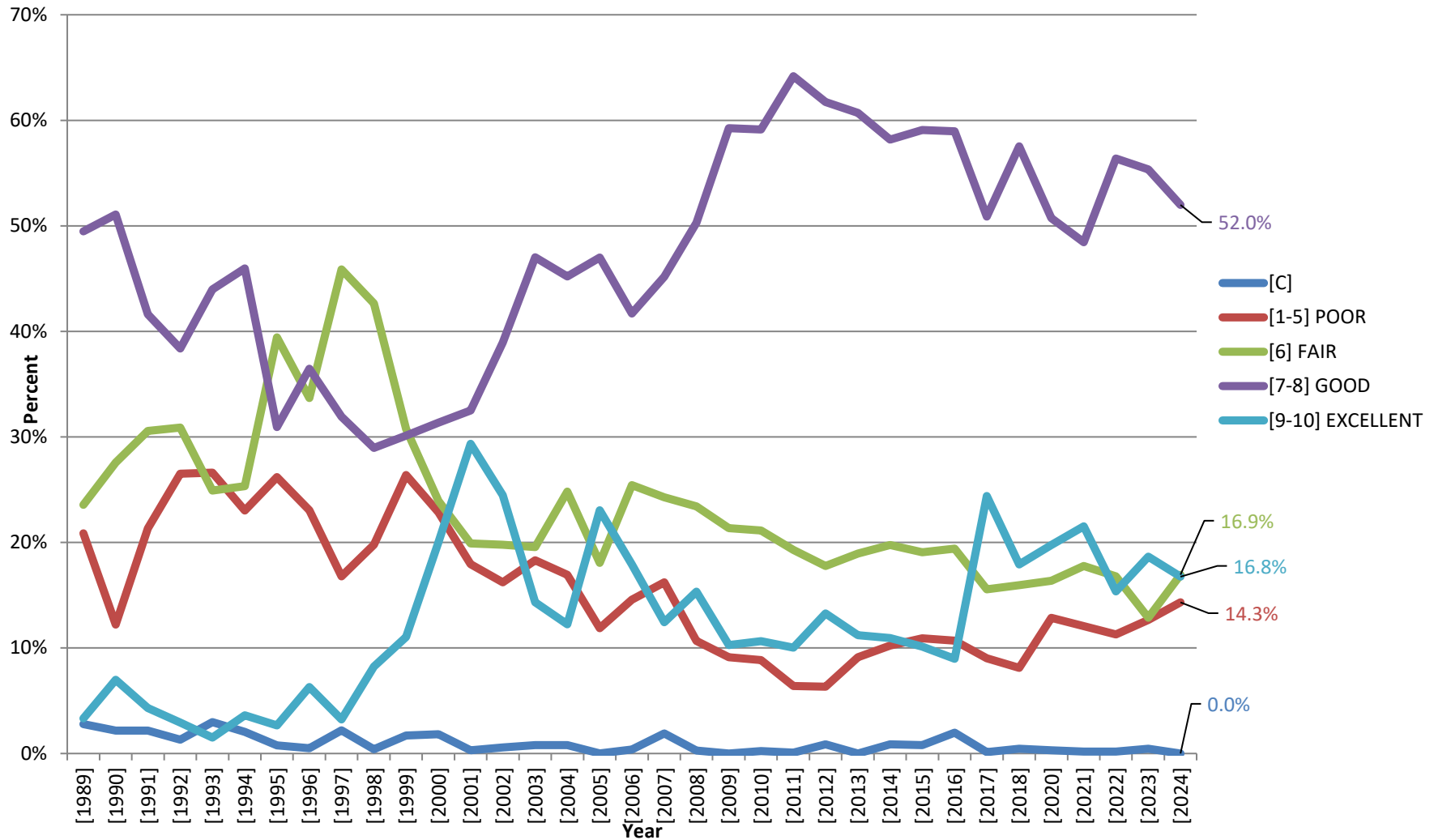
RoadAI

PERCENT MILEAGE FOR MINOR ARTERIAL SEGMENTS *

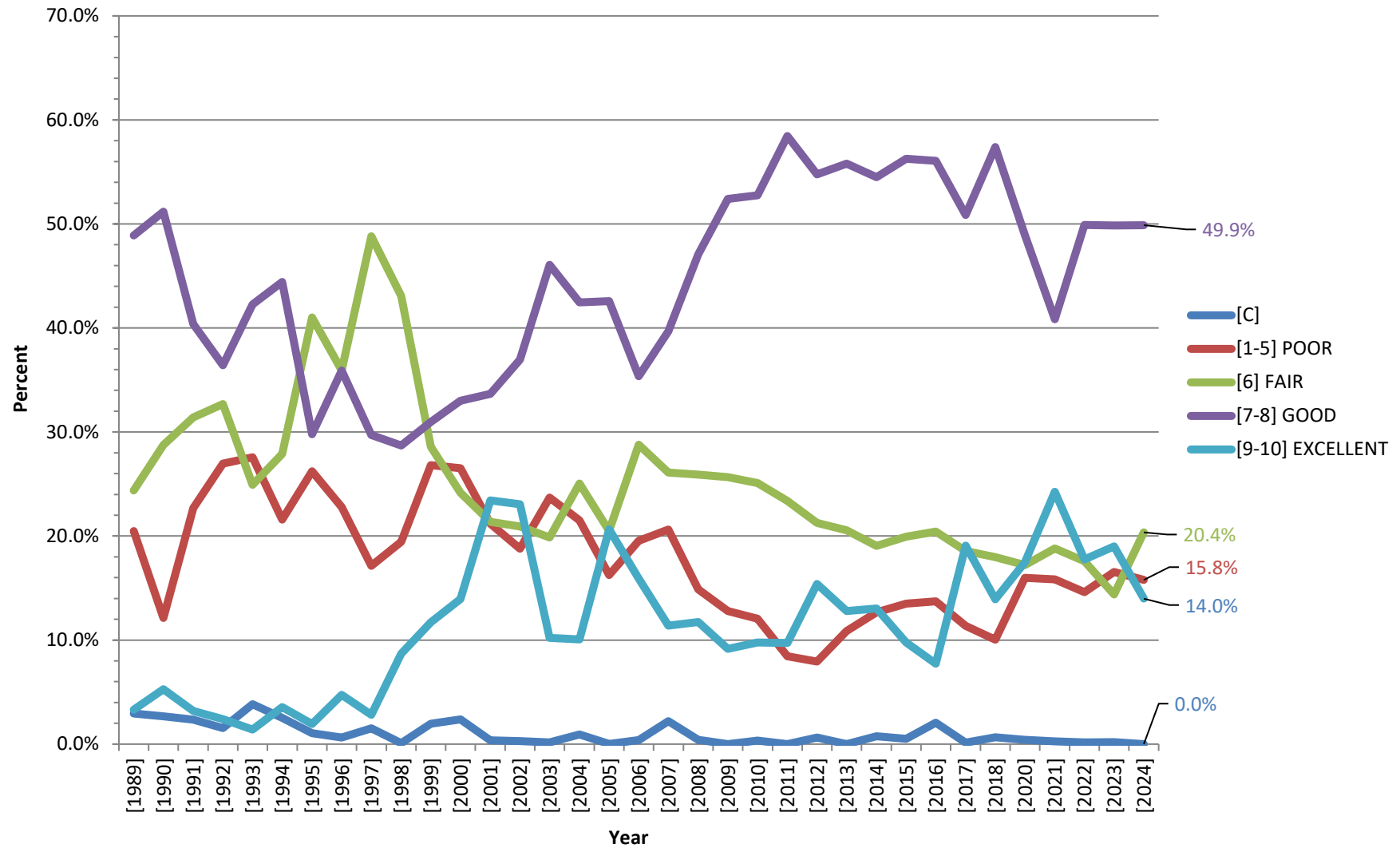
	[C]	[1-5] POOR	[6] FAIR	[7-8] GOOD	[9-10] EXCELLENT
[1989]	2.3%	22.1%	20.8%	51.5%	3.3%
[1990]	0.5%	12.5%	23.6%	50.8%	12.7%
[1991]	1.6%	16.8%	27.8%	45.8%	8.0%
[1992]	0.5%	25.1%	24.9%	44.9%	4.7%
[1993]	1.2%	24.6%	24.9%	47.6%	1.7%
[1994]	1.0%	26.1%	19.9%	49.2%	3.8%
[1995]	0.2%	26.1%	36.1%	33.3%	4.2%
[1996]	0.2%	23.6%	28.9%	37.7%	9.6%
[1997]	3.7%	16.0%	39.5%	36.7%	4.1%
[1998]	1.1%	20.5%	41.6%	29.6%	7.2%
[1999]	1.1%	25.4%	35.9%	28.1%	9.4%
[2000]	0.5%	14.3%	23.4%	27.5%	34.3%
[2001]	0.2%	11.2%	16.9%	30.1%	41.6%
[2002]	1.2%	10.9%	17.4%	43.1%	27.4%
[2003]	2.1%	7.4%	19.0%	49.0%	22.6%
[2004]	0.5%	7.0%	24.3%	51.2%	17.0%
[2005]	0.0%	2.3%	12.7%	56.7%	28.3%
[2006]	0.4%	3.7%	18.1%	55.6%	22.3%
[2007]	1.3%	6.5%	20.2%	57.2%	14.7%
[2008]	0.0%	1.4%	18.0%	57.3%	23.2%
[2009]	0.0%	1.1%	12.0%	74.2%	12.7%
[2010]	0.0%	1.7%	12.3%	73.4%	12.6%
[2011]	0.3%	1.7%	10.0%	77.3%	10.7%
[2012]	1.4%	2.7%	9.8%	77.7%	8.5%
[2013]	0.0%	5.1%	15.3%	71.9%	7.6%
[2014]	1.1%	4.6%	21.4%	66.6%	6.2%
[2015]	1.5%	4.9%	17.1%	65.6%	11.0%
[2016]	1.8%	3.8%	17.1%	65.6%	11.8%
[2017]	0.1%	3.6%	8.7%	50.9%	36.6%
[2018]	0.0%	3.7%	11.3%	57.9%	27.1%
[2020]	0.0%	5.7%	14.4%	54.9%	25.0%
[2021]	0.0%	3.4%	15.4%	65.9%	15.3%
[2022]	0.3%	3.7%	15.0%	71.3%	9.8%
[2023]	1.1%	3.8%	9.4%	67.9%	17.8%
[2024]	0.0%	10.9%	8.9%	56.9%	23.3%

RoadAI

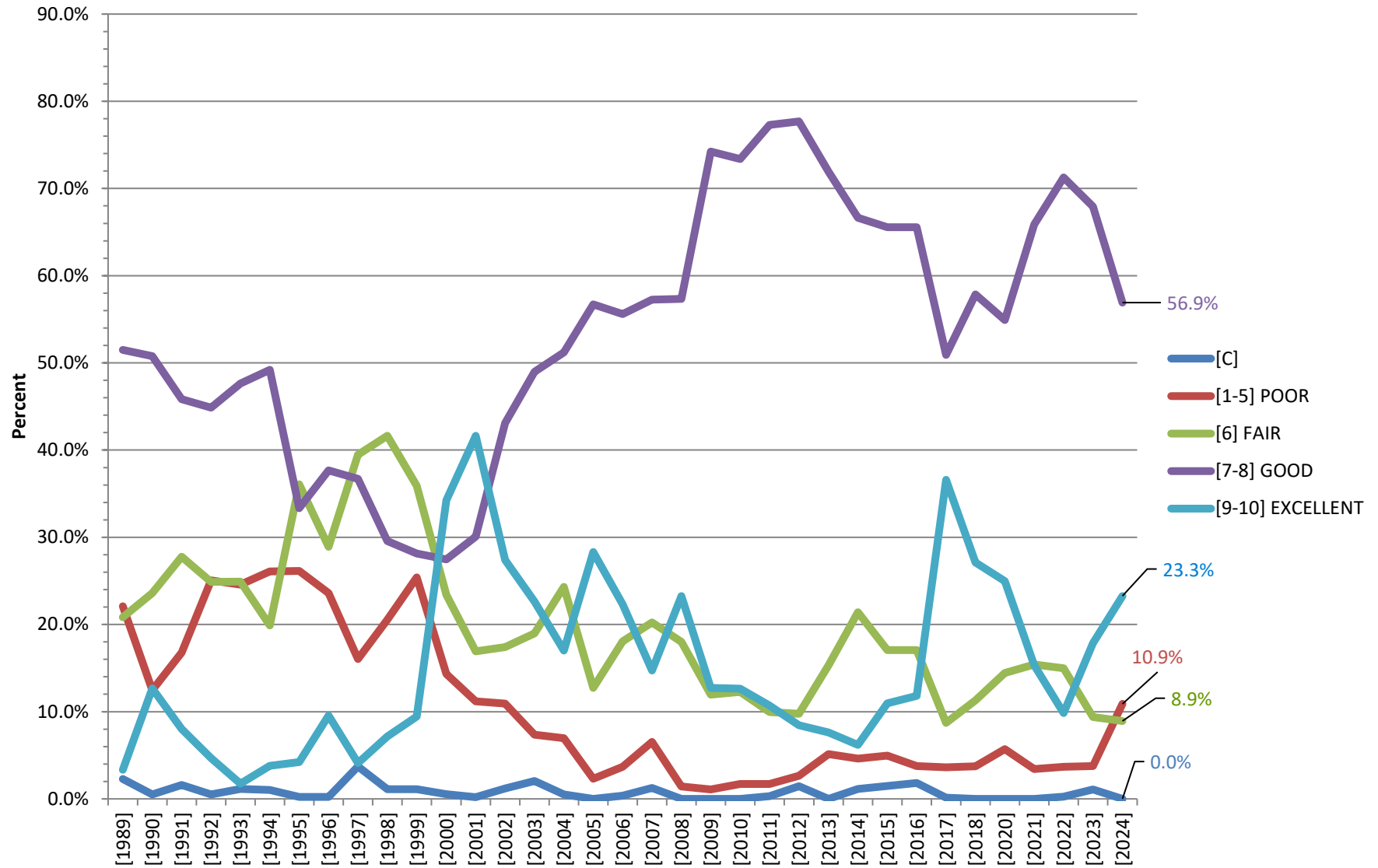
Percent Mileage for ALL Road Segments



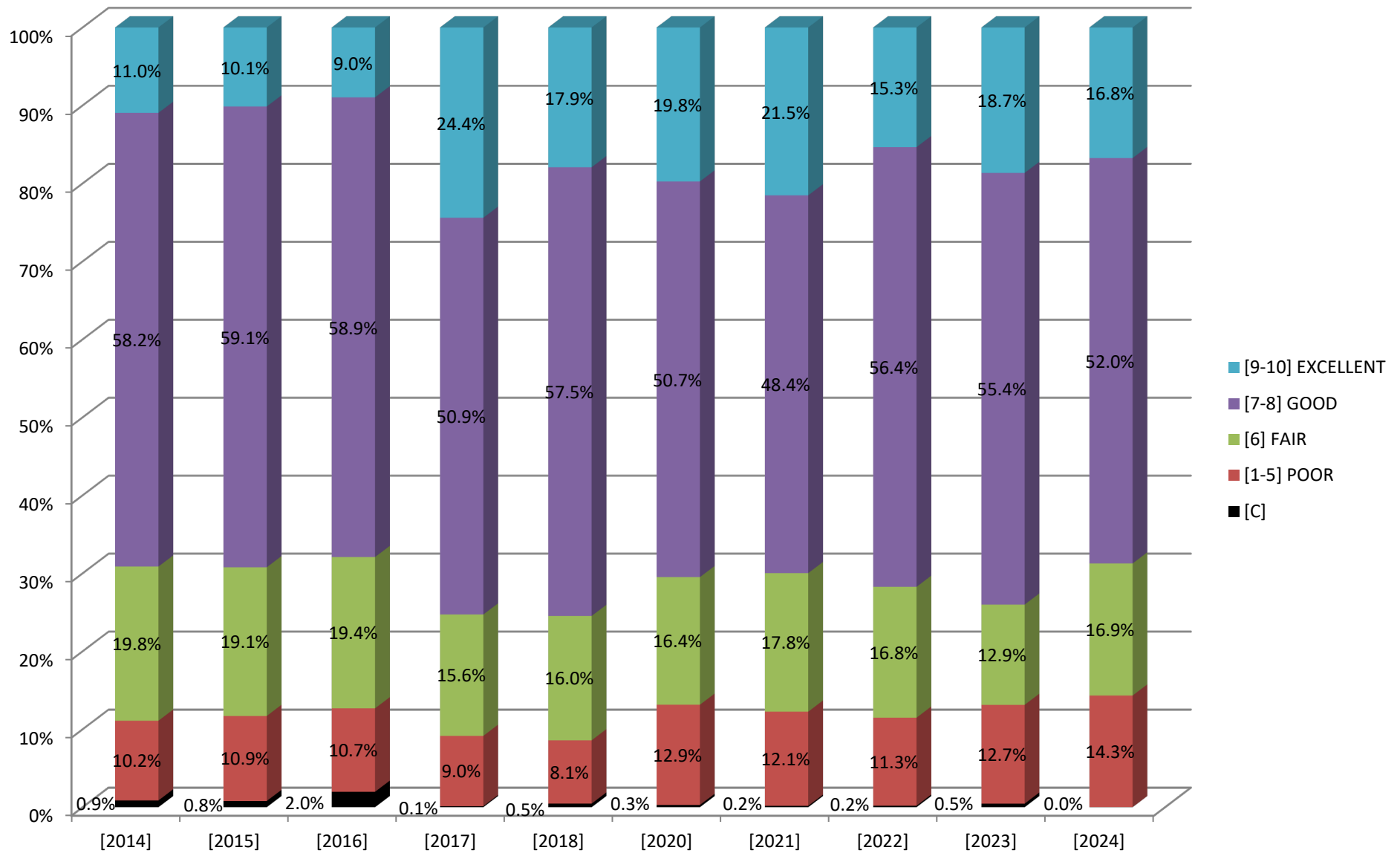
Percent Mileage for COLLECTOR Road Segments



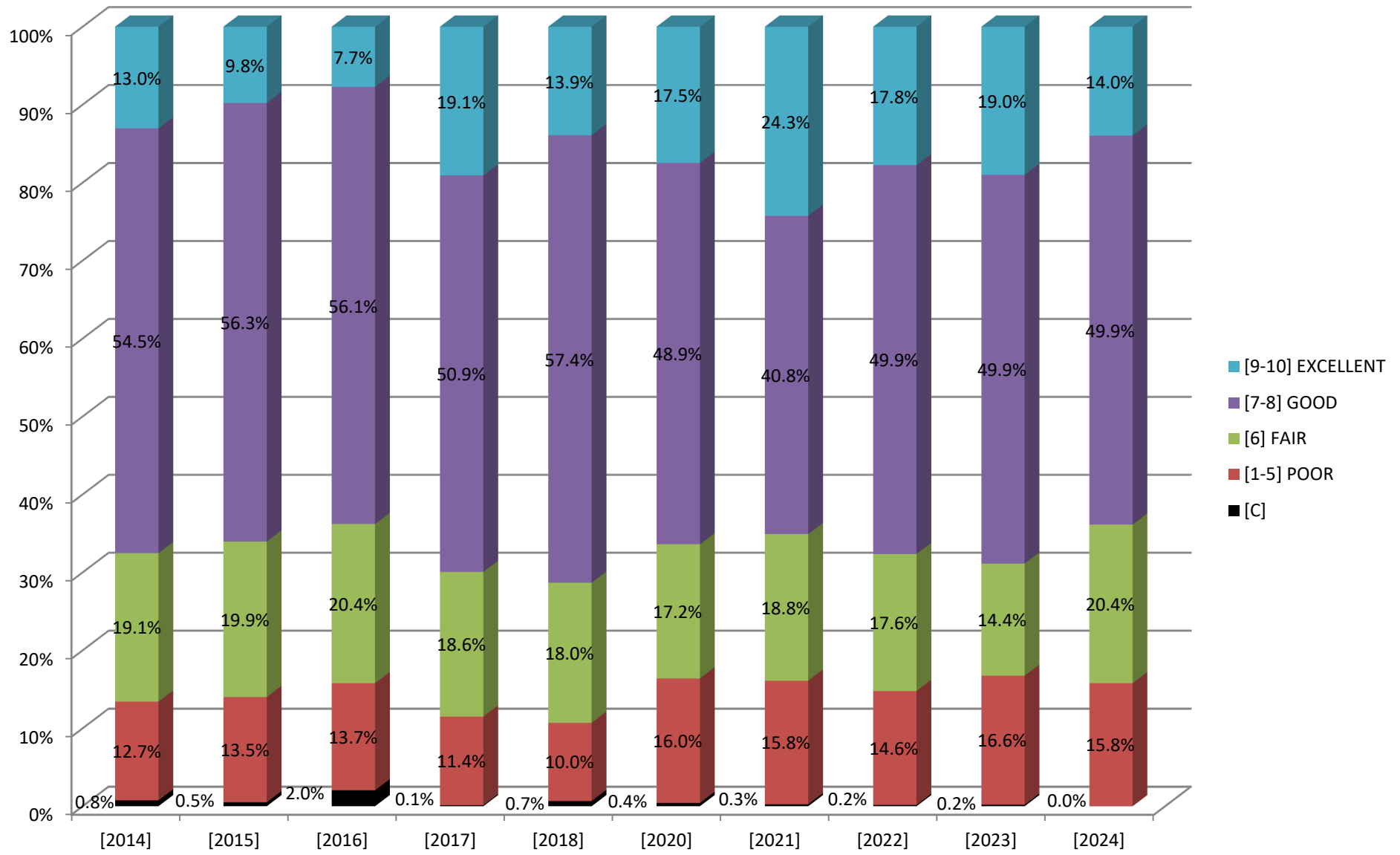
Percent Mileage for MINOR ARTERIAL Road Segments



BMTS Urban Area All Road Pavement Scores - % Mileage



BMTS Urban Area Collector Pavement Scores - % Mileage



BMTS Urban Area Minor Arterial Pavement Scores - % Mileage

